



La Guardia Precast Pavement Test Section Installation

(photos by Shiraz Tayabji)

- Sept. 26, 2002

Project Particulars

- Taxiway A (3,000 ft AC pavement) at LaGuardia is in need of rehabilitation
- AC option not preferred; cast-in place PCC option not feasible due to time constraints
- Precast paving being considered
 - Rehab 300 ft in each 56 hour weekend
 - Mill 16 in AC, prepare base, place PCC panels
 - Provide for light can installation
- Two 200 ft sections constructed Fall 2002
 - A 16 in. and a prestressed 12 in. designs

Thickness Design

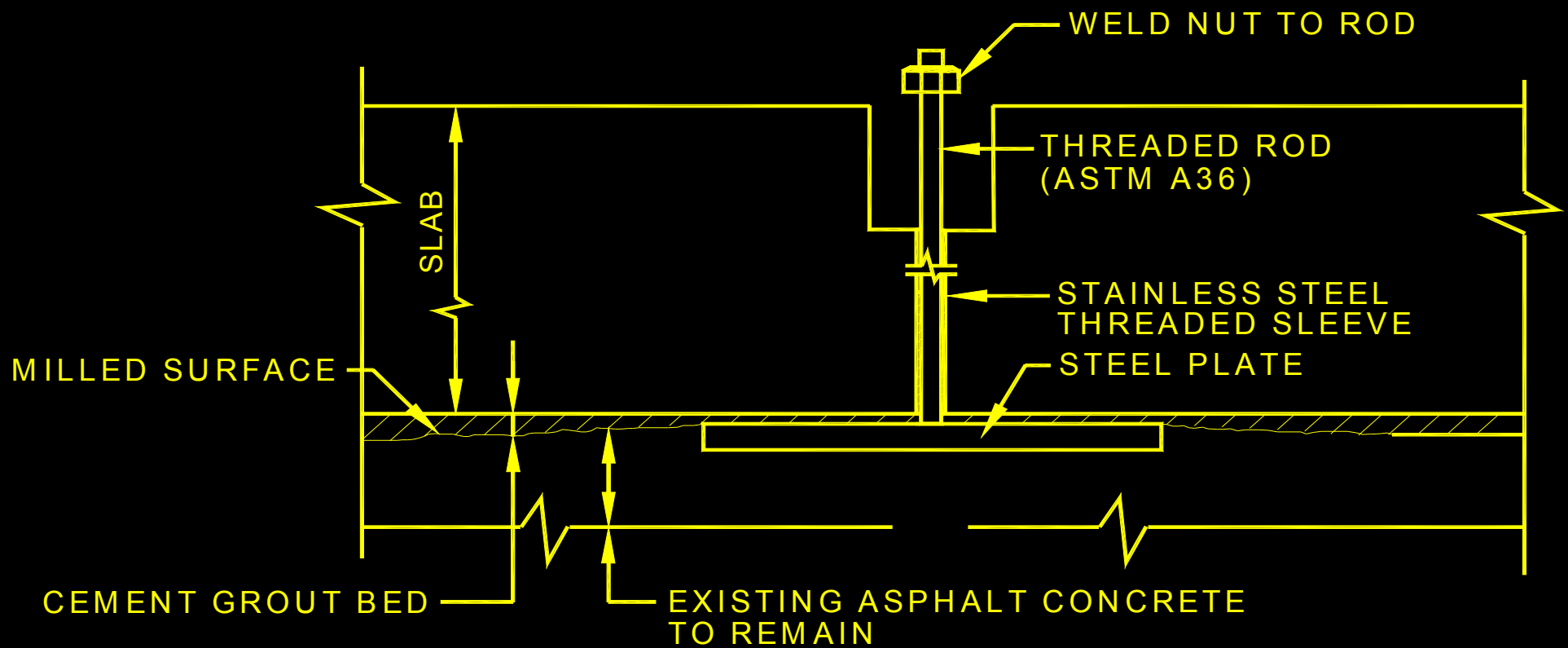
Conventional Precast Panels

	S.I. Units	English Units
Panel Dimension	3.8m x 7.6m	12.5' x 25'
Panel Thickness	406mm	16"
Dowel Diameter	50mm	2"
Grout Bed	12.7mm	1/2"

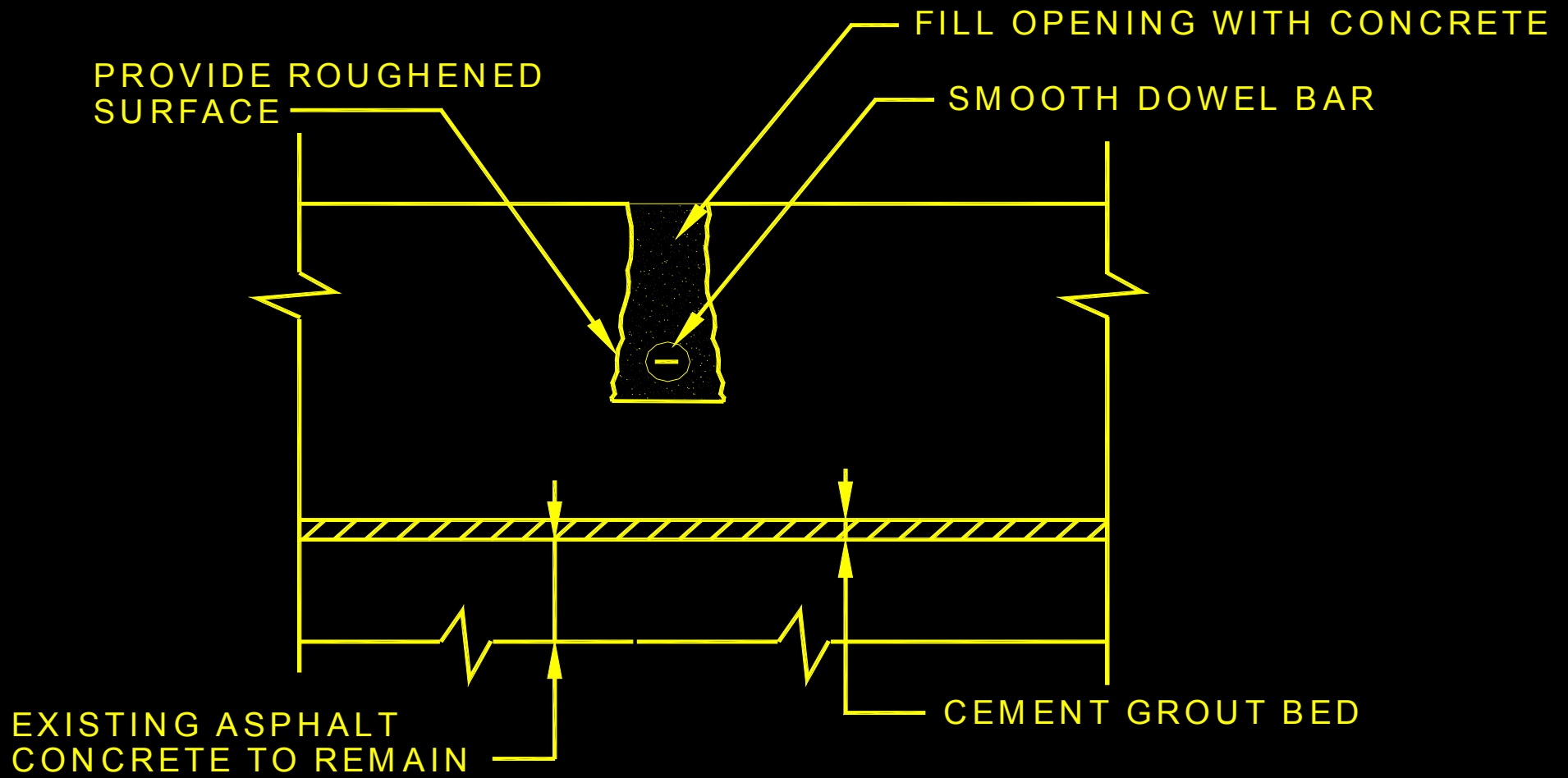
Thickness Design Pretensioned Precast Panels

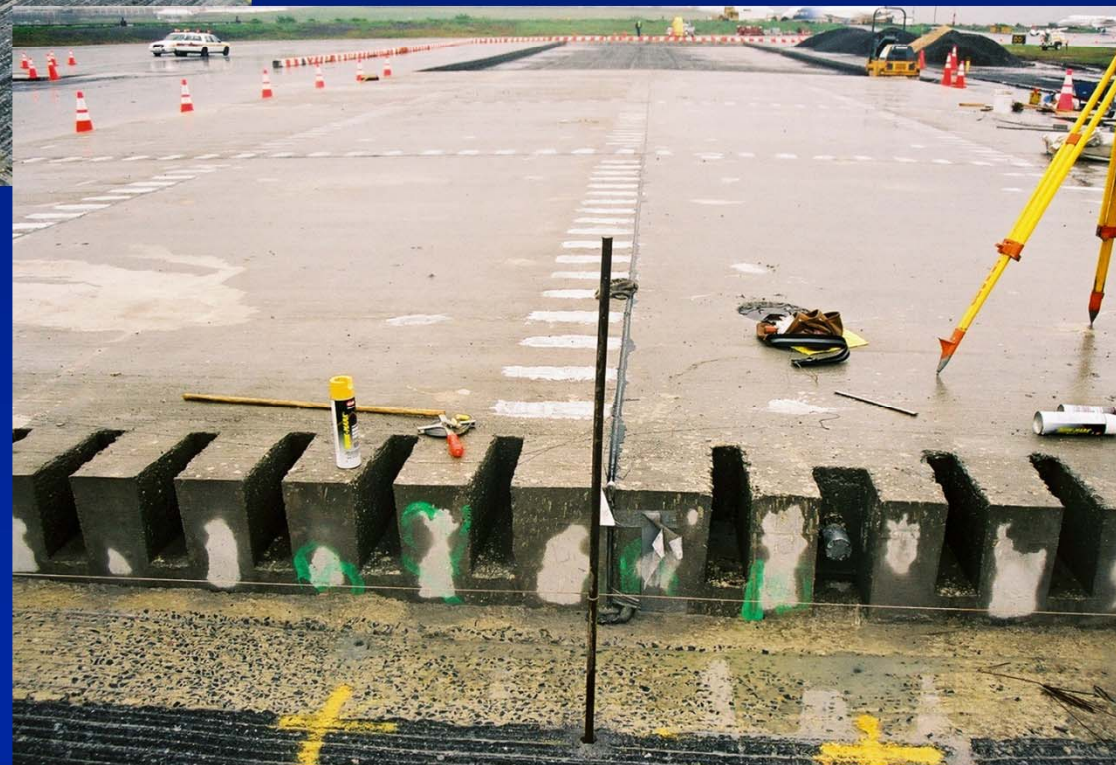
	S.I. Units	English Units
Panel Dimension	3.8m x 7.6m	12.5' x 25'
Panel Thickness	300mm	12"
Dowel Diameter	38mm	1½"
Steel Strands (Diameter / Spacing)	12.7mm / 600mm	½" / 24"
Grout Bed	12.7mm	½"

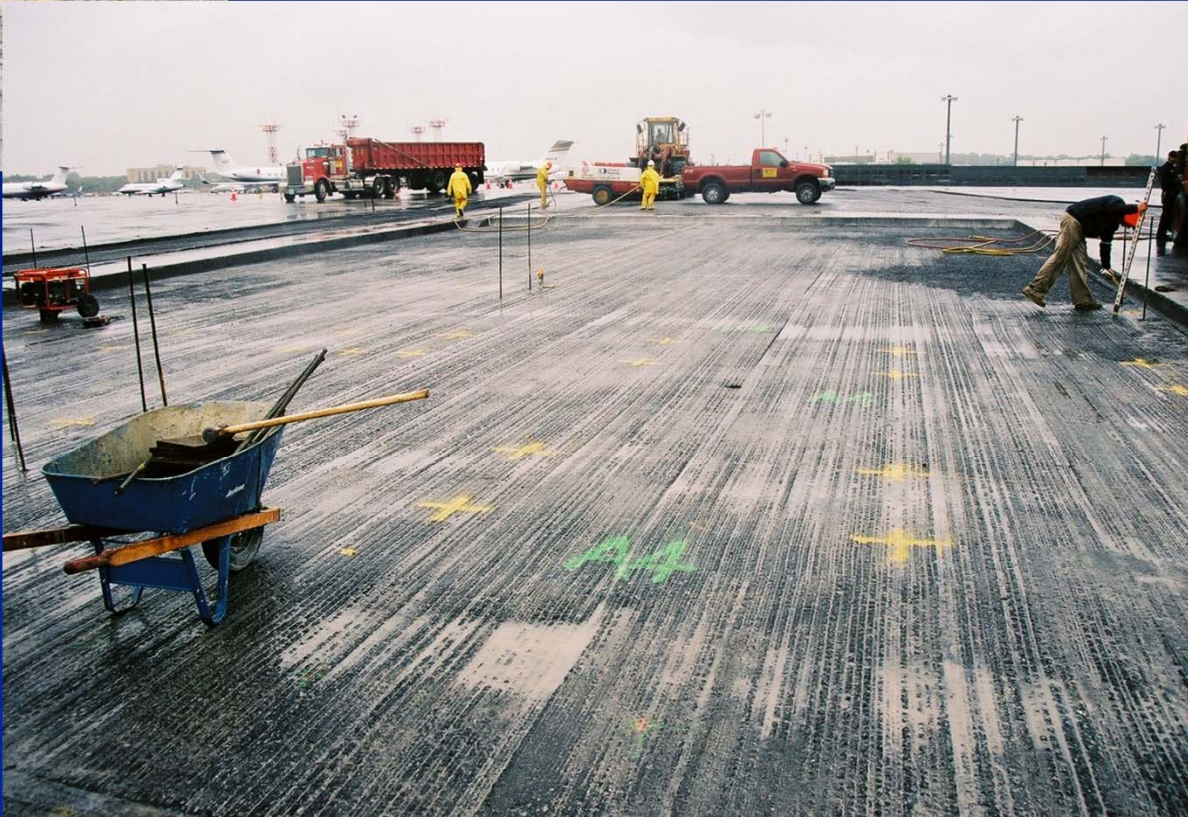
Details - Setting Bolt

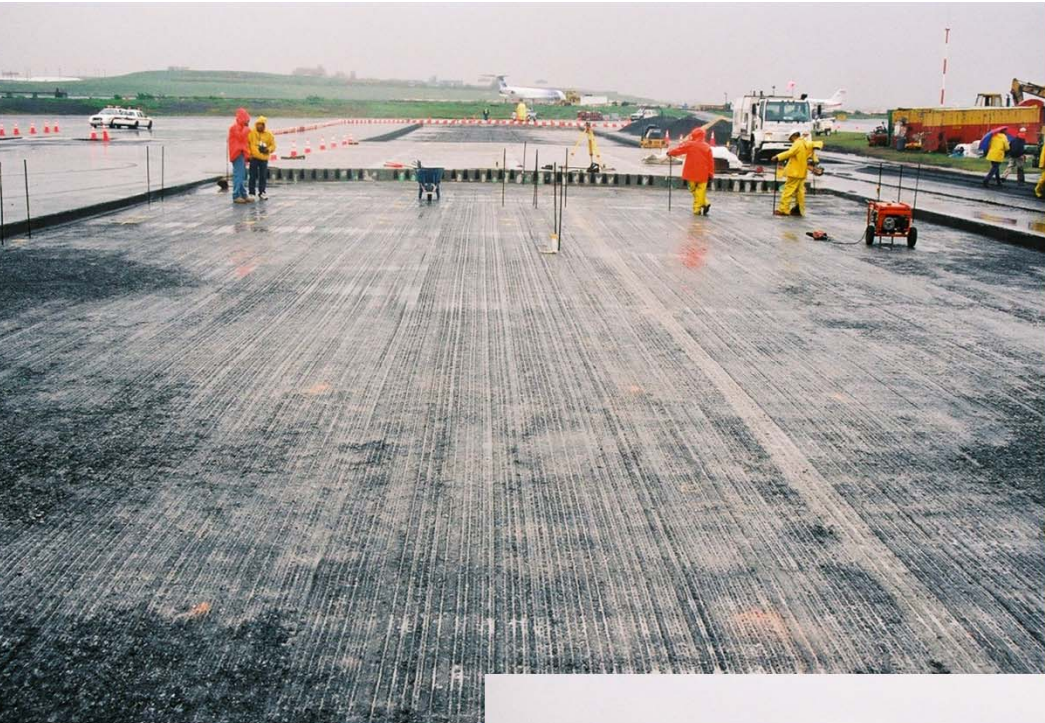


Details Dowel Slot









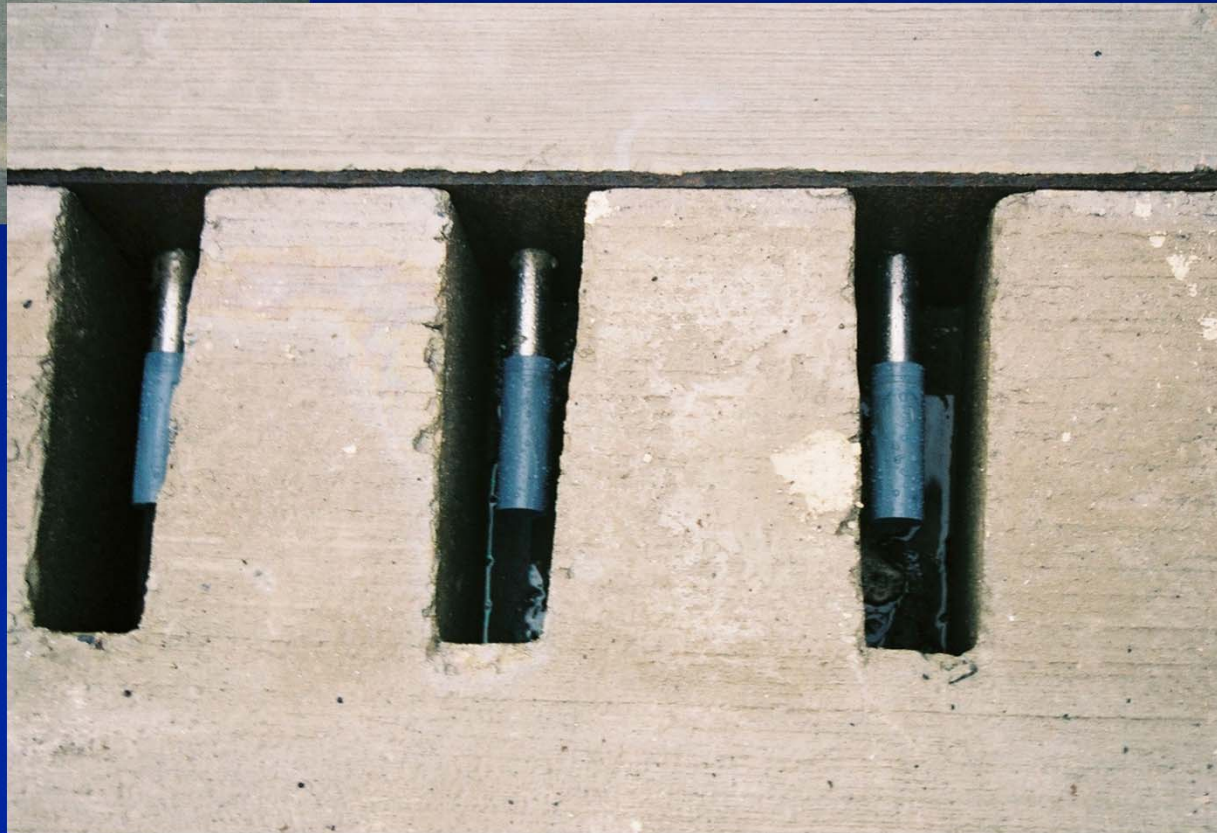












As of April 2010

